

Mentimeter Essentials

Mentimeter is an interactive presentation software used to engage audiences in real-time. It allows presenters to create quizzes, polls, and surveys, enabling audience participation and feedback during live sessions or online events.



Supported Browsers

The latest versions of all major desktop and mobile browsers are supported

Mentimeter Participation Features



Joining a Mentimeter Presentation

1. Go to menti.com
2. Enter the code on the screen
3. Click **Join**

Alternative: If provided scan the QR Code on the screen to join

Multiple Choice Questions

Select your response from the options given.
There can be multiple correct answers, or none if it's a poll
Your answers are collected and displayed in the overall results.



Quizzes

Answer each question by selecting the correct option.
Responses are scored, and can be compared with others



Word Clouds

A word cloud allows text responses.
User responses will appear in a cloud on the instructor's screen with the most frequent responses being the largest text.



Pin On Images

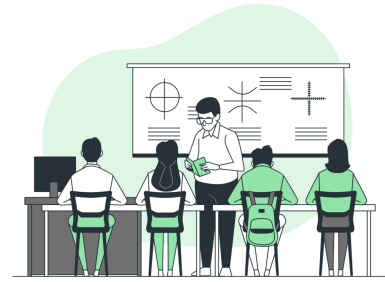
An image will be displayed, and users will be allowed to place their pin to indicate their responses.
All responses will appear on the instructor's display

Example:
"Where are you from?" with a map of Canada on display to set your answer



2x2 Grids

A 2x2 grid will appear and you are prompted to select the quadrant that represents your answer.
Responses are recorded and contribute to the overall results



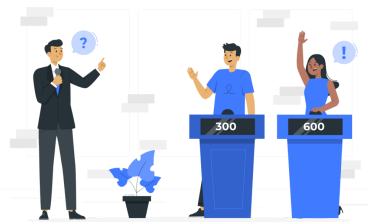
Open-Ended Questions

Open-ended responses allow for text-input in the textbox that is provided.
Responses will be displayed on the instructor's screen and can be used to being discussions.



Quiz Competitions

Select the correct answer for each question to earn points.
Compete with others in real time and see your ranking on the leaderboard.



Quick Reference Guides

- [How to Participate in Mentimeter Presentations](#)
- [Mentimeter YouTube Channel](#)