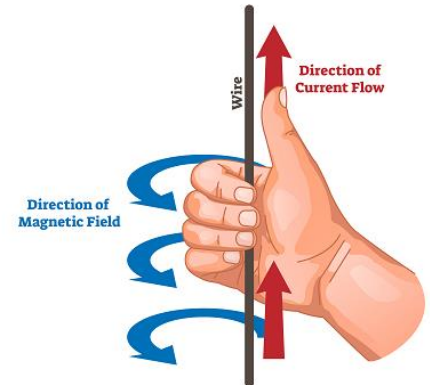




How to use the Right Hand Rule

Curl Right Hand Rule

- This method is best used for current flowing in wires
- Thumb in the direction of the current flow
- Rotate your fingers to determine the direction of the magnetic field



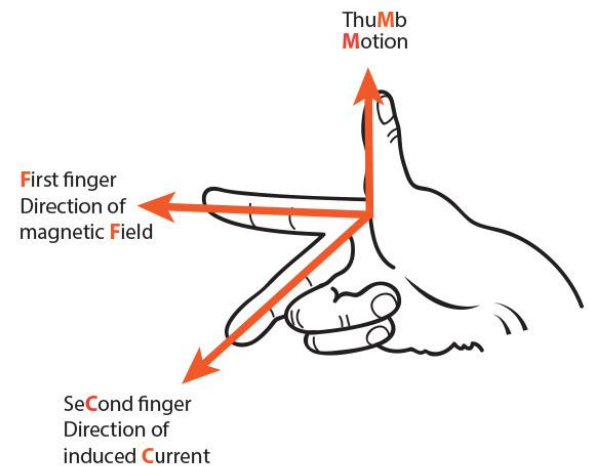
Example

A current runs through a straight wire from right to left. What direction would the magnetic field be?

1. Counter-clockwise
2. Into the screen
3. Out of the screen
4. Right to left
5. Left to right

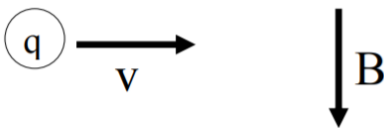
Fleming's Right Hand Rule

- This method is best used when you have a dot product
- Put your thumb in the direction of the force
- Put your index in the direction of the magnetic field
- Put your middle finger in the direction of the induced current



Example

What direction is the force on a positive charge when entering a uniform B field in the direction indicated?



Remember to always use your right hand

Student Learning Centre

Call: 905.721.8668 ext. 6578

Email: studentlearning@ontariotechu.ca

Website: ontariotechu.ca/studentlearning

Downtown Oshawa Location: Charles Hall

North Oshawa Location: Shawenjigewining Hall



This document is licensed under Attribution-NonCommercial 4.0 International (CC BY-NC 4.0). For more information visit creativecommons.org/licenses/by-nc/4.0/