



Canadian Graduate and Professional Student Survey

2022 Results

Prepared by the Office of Institutional Research and Analysis

Section 1 – Project Summary

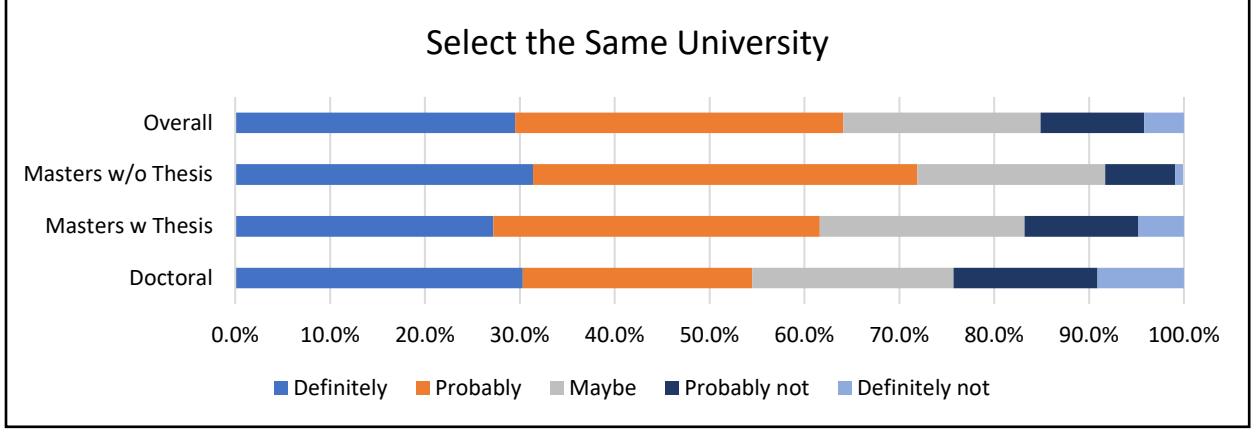
Project Summary	Totals
Number of students invited to participate	954
Responses received (partially or totally completed)	316
Response Rate	33.1%
Survey Open Date	18-Feb-22
Survey Close Date	3-May-22

Section 2 – Student Demographics

	Doctoral		Masters w Thesis		Masters w/o Thesis		Overall	
	Frequency	Count	Frequency	Count	Frequency	Count	Frequency	Count
Gender								
Male	50.9%	27	57.1%	37	44.0%	33	42.9%	97
Female	39.6%	21	37.8%	56	52.0%	39	51.3%	116
Non-Binary	0.0%	0	2.0%	2	0.0%	0	0.9%	2
Transgender	0.0%	0	2.0%	2	0.0%	0	0.9%	2
Two-spirit	0.0%	0	0.0%	0	0.0%	0	0.0%	0
Another gender identity	0.0%	0	0.0%	0	0.0%	0	0.0%	0
Age								
<=25	1.9%	1	45.8%	44	32.0%	24	30.8%	69
>25	98.1%	52	54.2%	52	68.0%	51	69.2%	155
Marital Status								
Married	38.5%	20	28.4%	27	29.7%	22	31.2%	69
Single	61.5%	32	71.6%	68	70.3%	52	68.8%	152
Children								
None	90.9%	90	86.7%	156	85.8%	115	87.4%	361
1 or more	9.1%	9	15.4%	24	14.2%	19	12.6%	52
Citizenship								
Canadian/Permanent Residence	69.8%	37	80.0%	76	40.5%	30	64.4%	143
International	30.2%	16	20.1%	19	59.5%	44	35.6%	79
Academic Load								
Full-Time	91.0%	61	85.7%	108	74.0%	91	82.3%	260
Part-Time	9.0%	6	14.3%	18	26.0%	32	17.7%	56
Degree								
Social Sciences	24.2%	16	9.5%	12	0.0%	0	8.9%	28
Business/Management	0.0%	0	1.6%	2	9.8%	12	4.4%	14
Education	0.0%	0	15.9%	20	28.5%	35	17.5%	55
Engineering	42.4%	28	19.1%	24	32.5%	40	29.2%	92
Physical and Mathematical Sciences	3.0%	2	3.2%	4	0.0%	0	1.9%	6
Biological Sciences	3.0%	2	6.4%	8	0.0%	0	3.2%	10
Health Science	13.6%	9	25.4%	32	0.8%	1	13.3%	42
Arts & Culture	0.0%	0	0.0%	0	0.0%	0	0.0%	0
Finance/Mathematics/Computing	1.5%	1	0.0%	0	8.1%	10	3.5%	11
Other	12.1%	8	17.5%	22	18.7%	23	16.8%	53

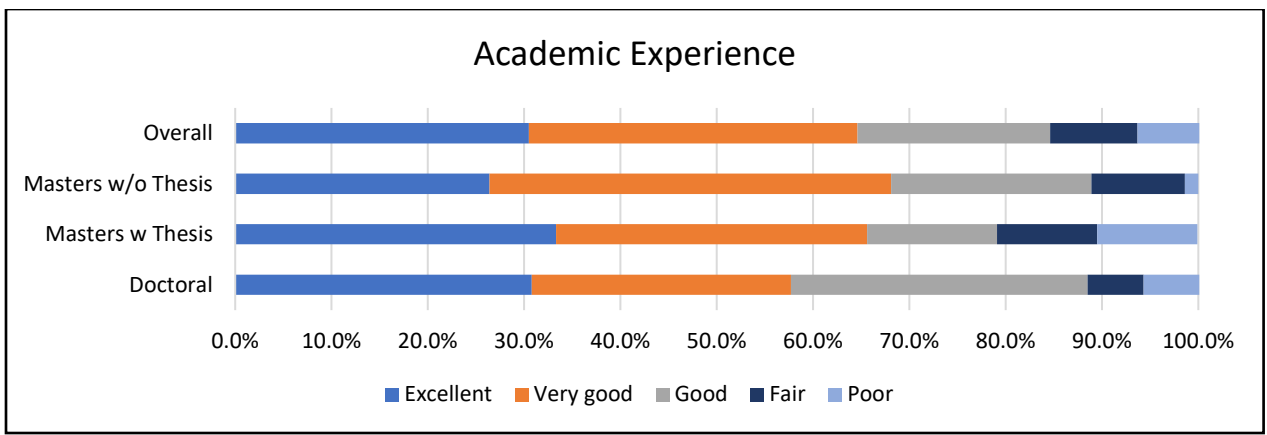
Section 3 – Overall Satisfaction

If you were to start your graduate/ professional career again, would you select this same university?

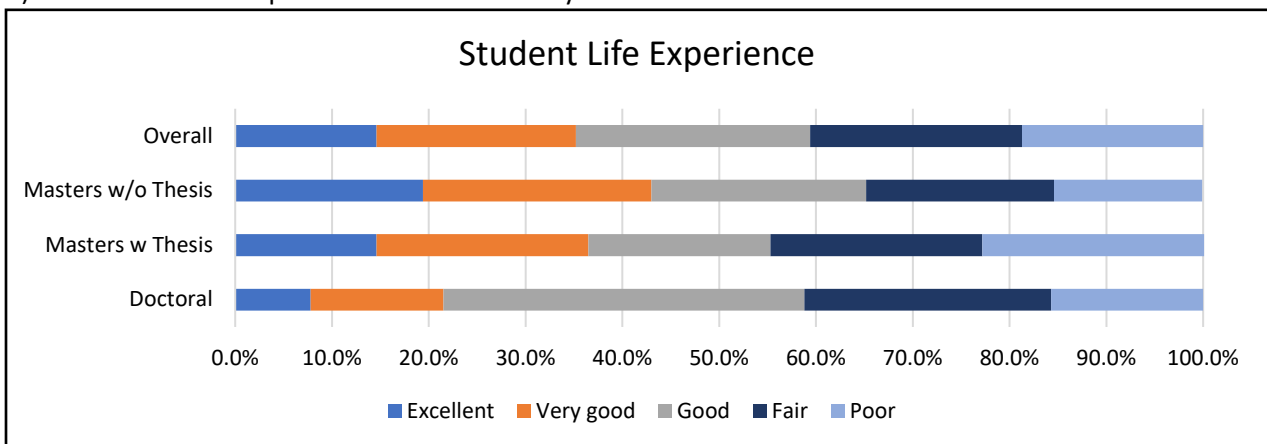


Overall, how would you rate the quality of:

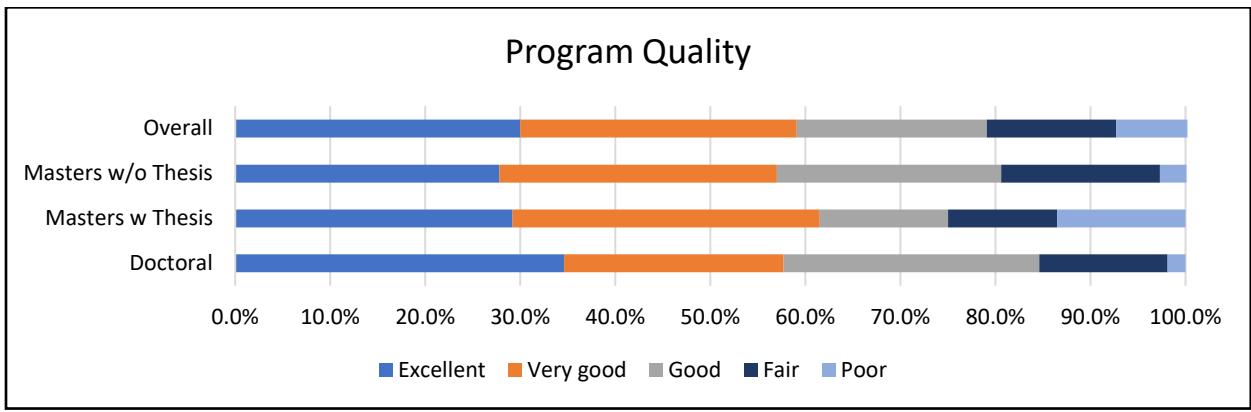
1) Your Academic Experience at this university?



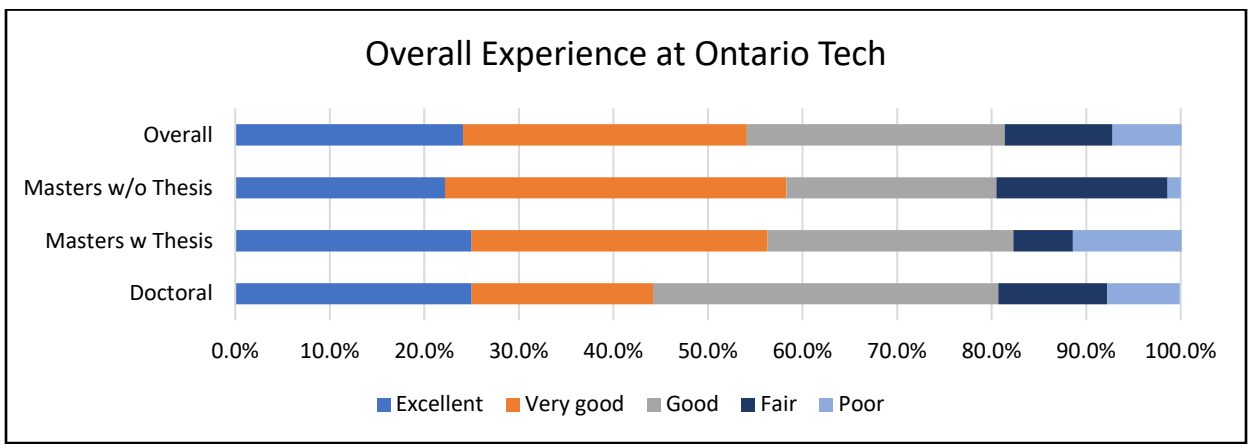
2) Your student life experience at this university?



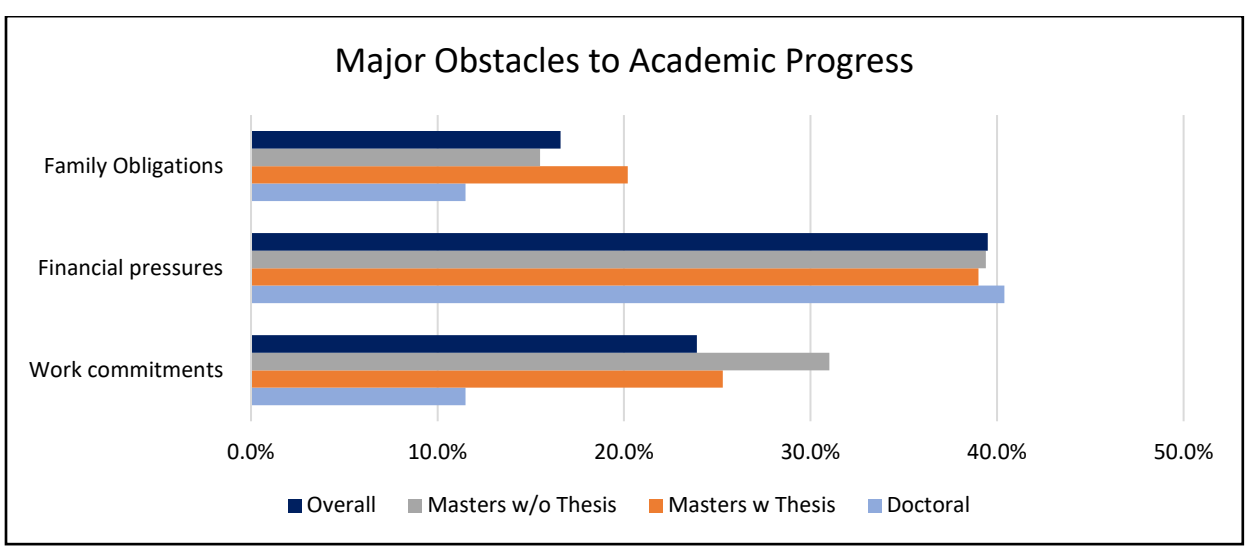
3) Your graduate/professional program at this university?



4) Your overall experience at this university?

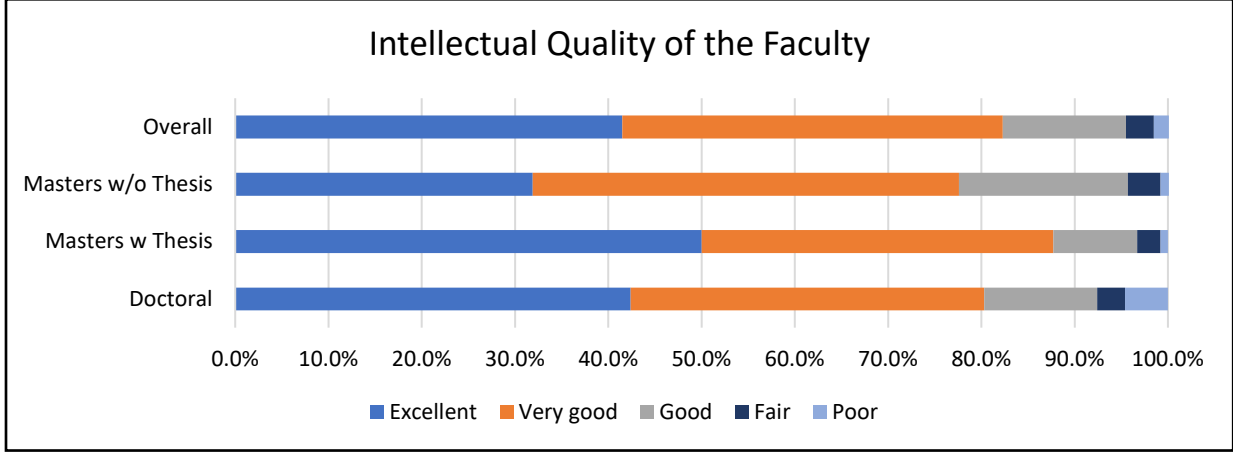


The extent to which the following factors are an obstacle to your academic progress:

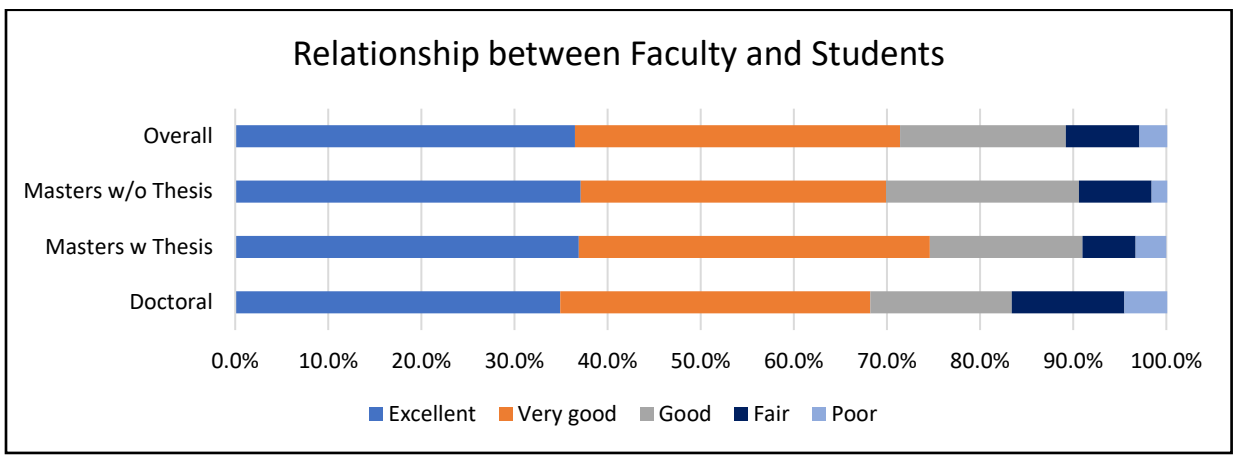


Section 4 – Program Satisfaction

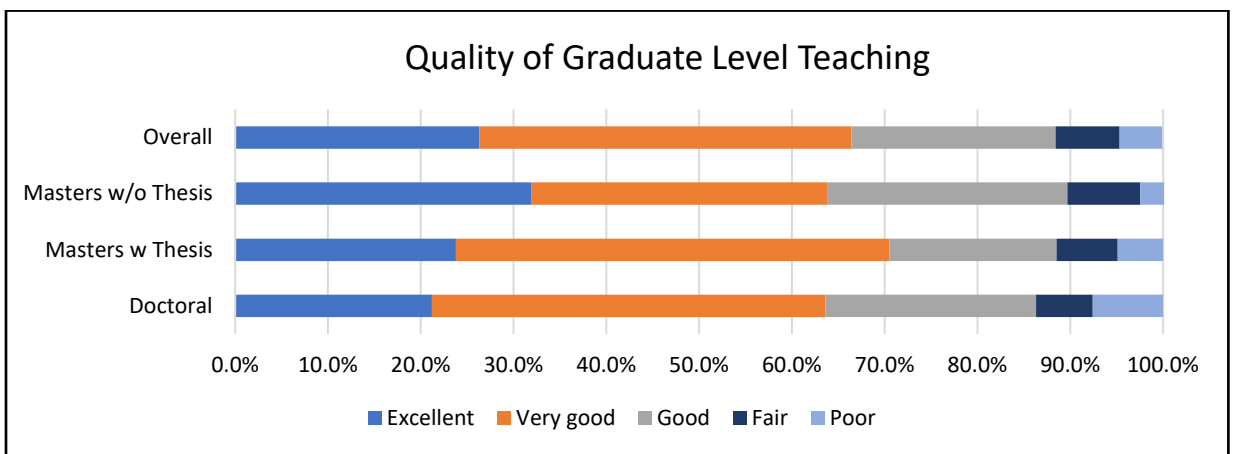
The intellectual quality of the faculty



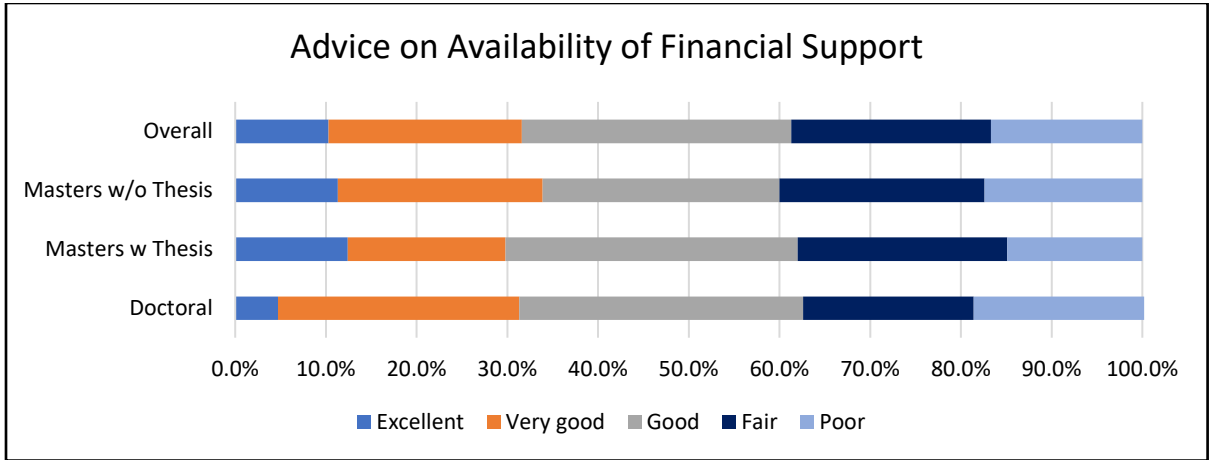
Relationship between Faculty and Students



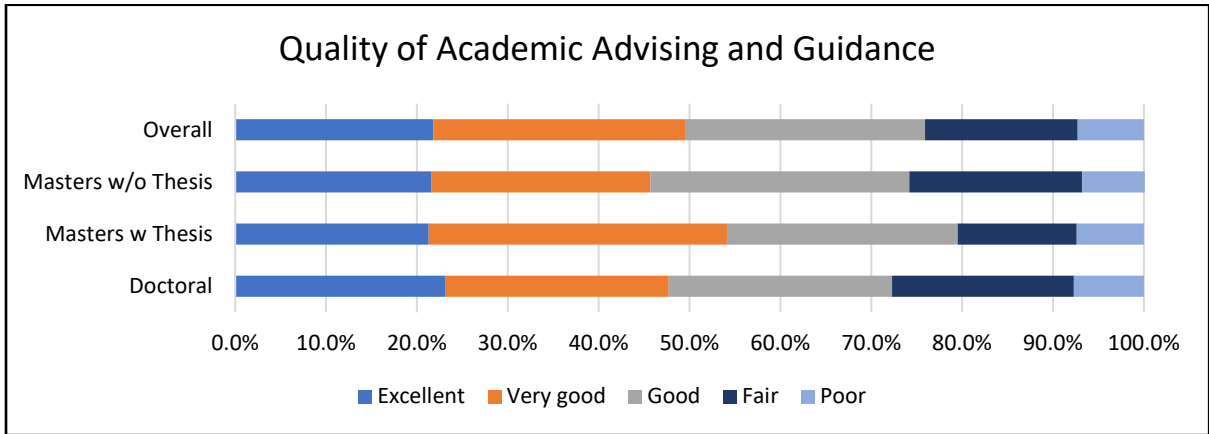
Quality of Graduate Level Teaching



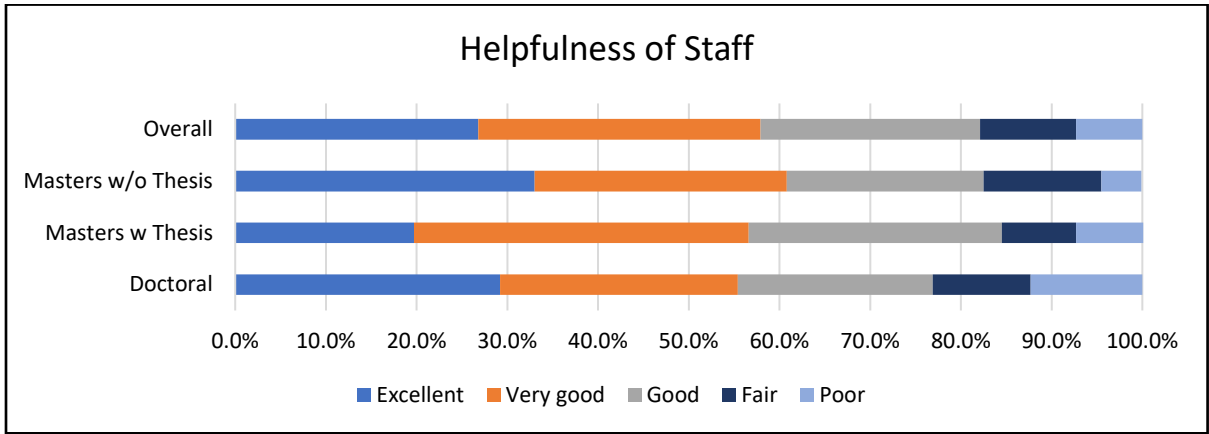
Advice on the availability of Financial Support



Quality of Academic Advising and Guidance



Helpfulness of Staff



Section 5 – Professional Skills Development

How would you rate the quality of the support and training you received in these areas? (Doctoral and Masters w Thesis only)

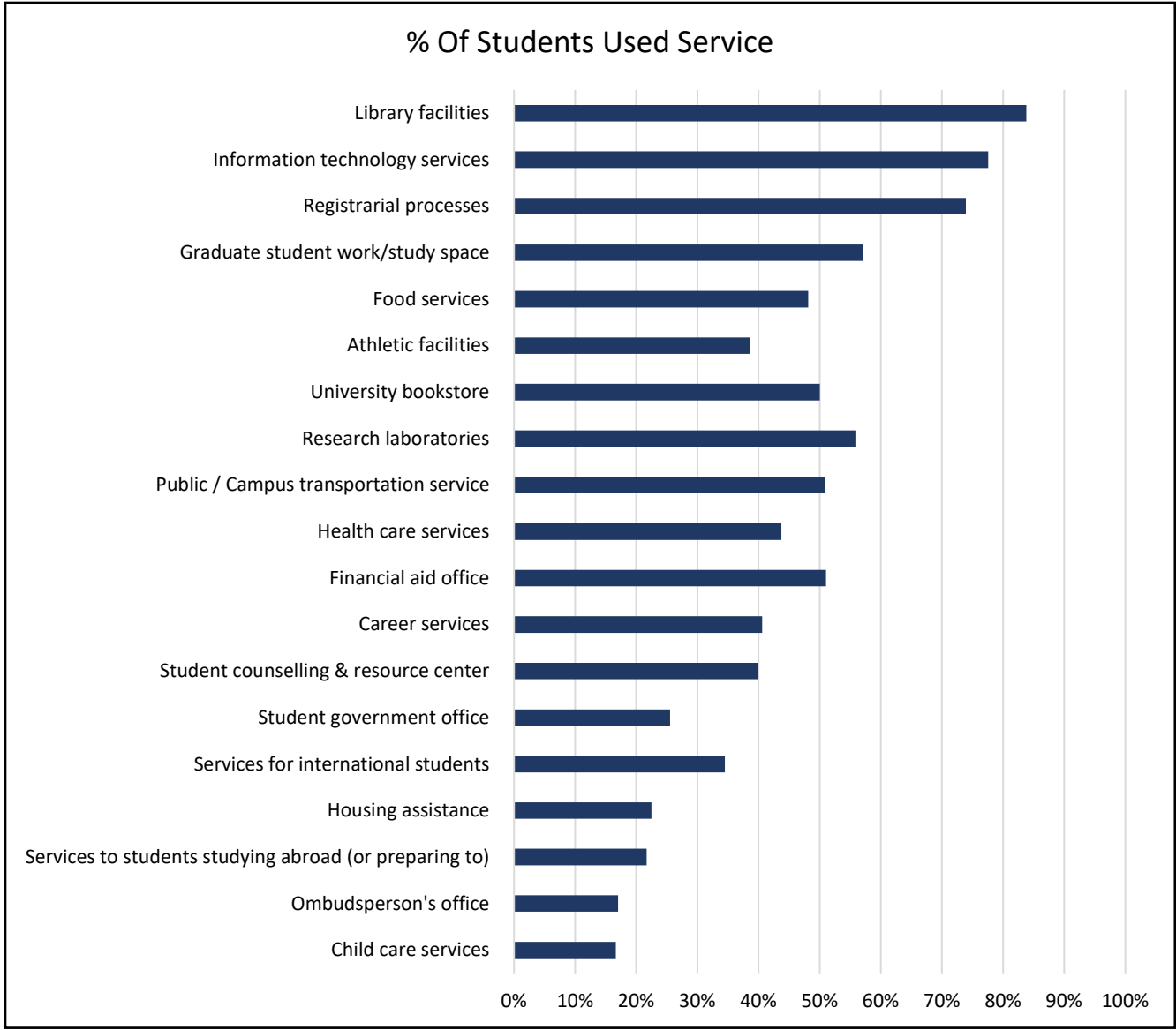


Section 6 – Financial

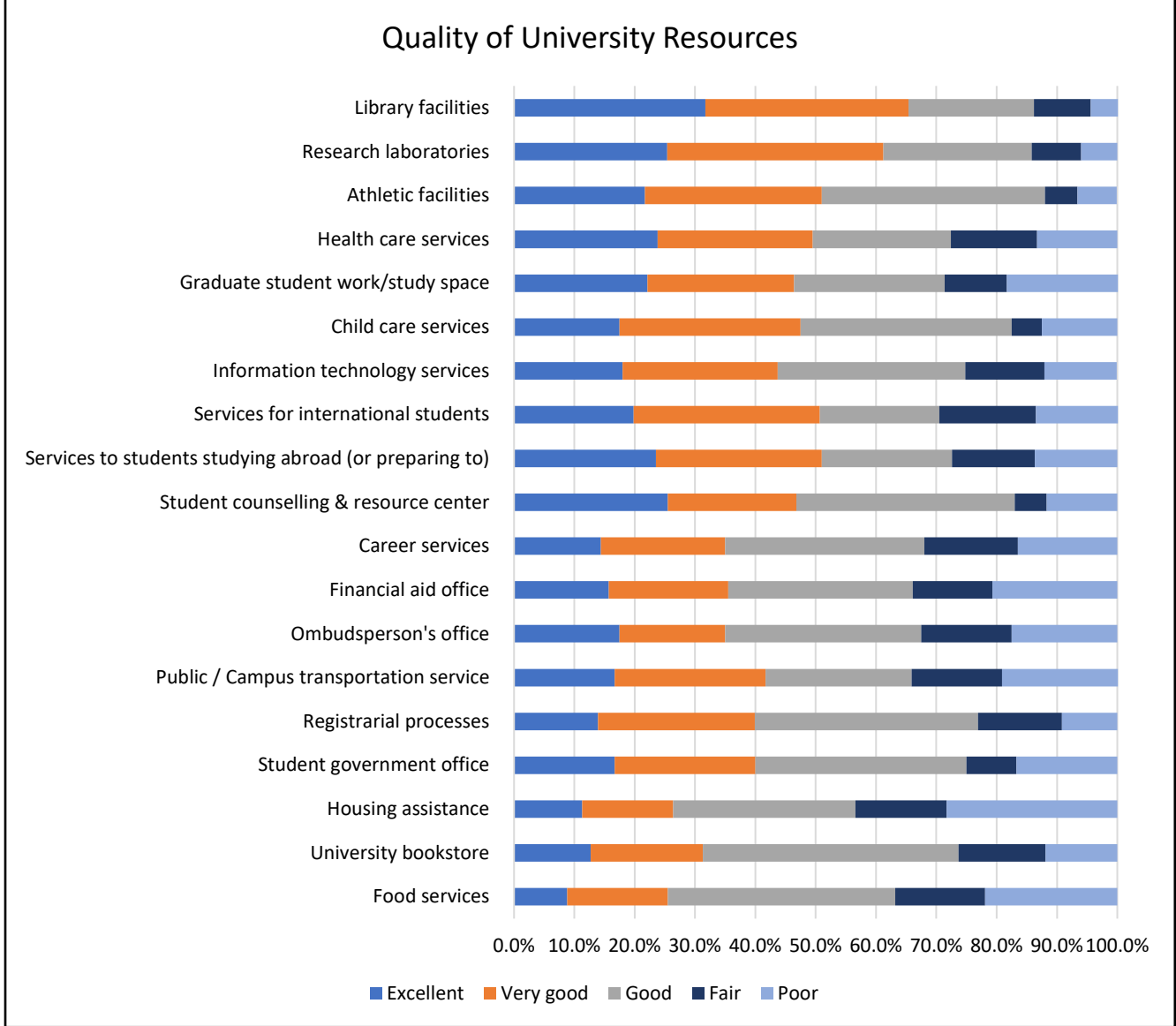
Estimated the amount of educational debt, if any, you will have to repay when you have completed your graduate degree here.

Debt	UG (%)	GR (%)
\$0	62.62	43.97
\$1 - \$9,999	8.25	14.22
\$10,000 - \$19,999	7.28	15.52
\$20,000 - \$29,999	9.71	9.91
\$30,000 - \$39,999	5.34	6.47
\$40,000 - \$49,999	2.91	4.31
\$50,000 - \$59,999	1.94	1.72
\$60,000 - \$69,999	1.46	2.16
\$70,000 - \$79,999	0.49	0.43
\$80,000 or more	0	1.29

Section 7 - University Resources

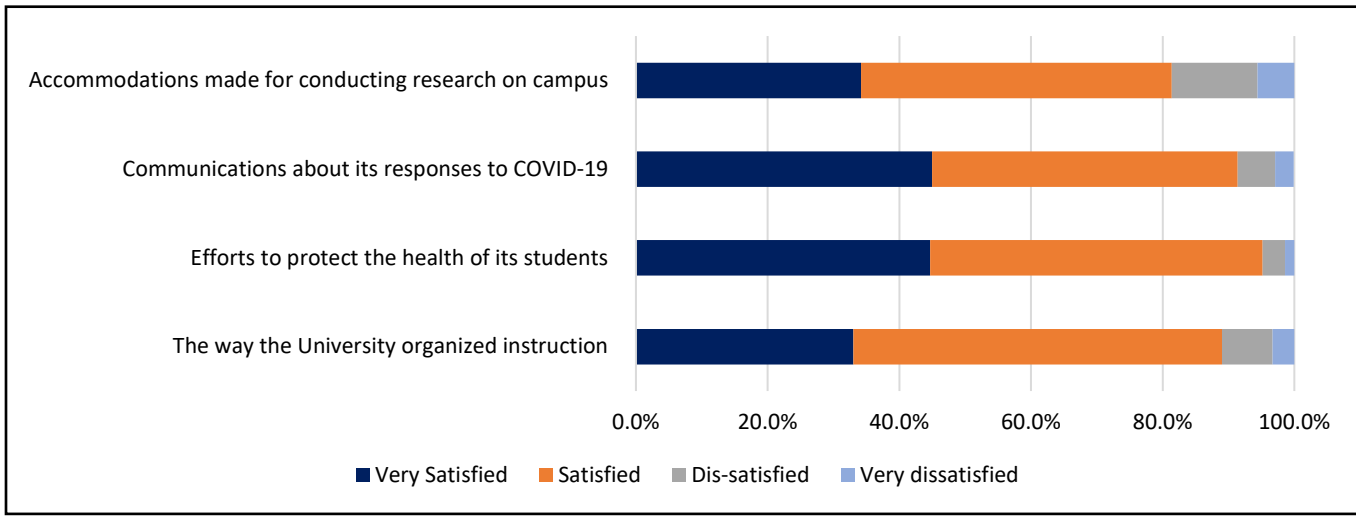


Please rate the following university resources based on the quality you have experienced while using them



Section 8 – COVID-19 Situation

To what extent are you satisfied or dissatisfied with the following aspects of how your university responded to the COVID-19 pandemic during the 2020-2021 academic year?



Has the COVID-19 pandemic delayed the progression of your program or studies?

