



UNIVERSITY OF ONTARIO
INSTITUTE OF TECHNOLOGY

University of Ontario Institute of Technology

Fact Book 2010 -2011

October 2011

Prepared by:

Office of Institutional Research and Analysis
University of Ontario Institute of Technology
2000 Simcoe Street North
Oshawa, Ontario L1H 7K4
E-mail: oir@uoit.ca
URL: www.uoit.ca/oir

Table of Contents

Student Data 2010-2011	3
Undergraduate Students by Faculty, Gender and Full-time/Part-time Status, 2010-2011	3
Graduate Students by Faculty, Gender and Full-time/Part-time Status, 2010-2011	3
Undergraduate Students and FTEs by Faculty, Program and Full-time/Part-time Status, 2010-2011	4
Graduate Students and FTEs by Faculty, Program and Full-time/Part-time Status, 2010-2011	6
Undergraduate Students by Faculty and Residency, 2010-2011	7
Graduate Students by Faculty and Residency, 2010-2011	7
Students	8
Undergraduate Student Demographics	8
Graduate Student Demographics	8
Overall Undergraduate and Graduate Student Demographics, 2010-2011	9
Undergraduate Student Count by Faculty	9
Undergraduate Enrolment by Faculty, 2010-2011	9
Graduate Student Count by Faculty	10
Graduate Enrolment by Faculty, 2010-2011	10
Undergraduate FTEs by Faculty	10
Graduate FTEs by Faculty	11
Age Distribution of Students	11
New Student Admission Averages by Faculty	11
New Student Applications from Ontario High Schools, Yield Rates	12
Distribution of First Year Class Sizes	13
Distribution of Fourth Year Class Sizes	13
Degrees Granted, 2004-2010	13
Faculty	14
Core Faculty Demographics	14
Core Faculty Demographics, 2010-2011	14
Core Faculty Count by Faculty, Rank and Gender, 2010-2011	15
Distribution of Core Faculty Members by Faculty and Rank, 2010-2011	15
Tuition and Fees	16
Tuition and Fees (2010-11 full-time fee schedule)	16

Student Financial Aid & Scholarships.....	17
Student Scholarships and Awards – 2010-11.....	17
Student Financial Aid - 2010-11	18
Research.....	19
Research Grants and Contracts by Faculty/School, 2010-11.....	19
Percentage of the Total Research Grants Held by Faculty/School, 2010-2011	19
Research Grants by Faculty, 2006-2011.....	20
Total Research Grants and Contracts, 2006-2011	20
Research Intensity per capita.....	21
Finance	22
Residences, Library and Physical Space	23
Residence Accommodation located on Durham College/ UOIT Property	23
Number of Library Holdings, 2006-2010.....	23
Library Collections, 2010.....	24
Library Personnel	24
Library Personnel, 2009-2010	24
Actual Physical Space by COU Category.....	25
Actual Physical Space by COU Category - November 2010	25
Athletics	27
Student Athletes by Sport, 2010-11.....	27

Student Data 2010-2011

All data summarizes official student enrolment as reported by UOIT to the Ontario Ministry of Training, Colleges and Universities. Unless, otherwise indicated all enrolments are as of November 1, 2009. Students pursuing more than one degree are counted within their major field of study.

Undergraduate Students by Faculty, Gender and Full-time/Part-time Status, 2010-2011

Faculty	Female			Male			FT	PT	Grand
	FT	PT	Total	FT	PT	Total	Total	Total	Total
Business & Information Technology	410	29	439	1269	57	1326	1679	86	1765
Education	316	1	317	113	1	114	429	2	431
Energy Systems & Nuclear Science	55		55	285	5	290	340	5	345
Engineering & Applied Science	62		62	958	24	982	1020	24	1044
Health Sciences	869	164	1033	275	40	315	1144	204	1348
Science	331	12	343	378	16	394	709	28	737
Social Science and Humanities	598	40	638	587	51	638	1185	91	1276
Undeclared	5	10	15	4	6	10	9	16	25
Total	2646	256	2902	3869	200	4069	6515	456	6971

Graduate Students by Faculty, Gender and Full-time/Part-time Status, 2010-2011

Faculty	Female			Male			FT	PT	Grand
	FT	PT	Total	FT	PT	Total	Total	Total	Total
Business & Information Technology		3	3	7	15	22	7	18	25
Education	13	30	43	3	16	19	16	46	62
Energy Systems & Nuclear Science	11	2	13	30	15	45	41	17	58
Engineering & Applied Science	15	2	17	115	10	125	130	12	142
Health Sciences	18	8	26	7	1	8	25	9	34
Science	20	1	21	43	1	44	63	2	65
Social Science and Humanities	18		18	8	1	9	26	1	27
Total	95	46	141	213	59	272	308	105	413

Undergraduate Students and FTEs by Faculty, Program and Full-time/Part-time Status, 2010-2011

Faculty	Program	Full-Time	Part-Time	Total	FTEs
Business & Information Technology	Accounting	79	7	86	74.7
	Business	1004	27	1031	1003.6
	Business (GENU)	15		15	12.3
	Business (Post Bridge)	33	1	34	33.7
	Business Bridging Program	16	17	33	28.8
	E-Commerce	6	2	8	7
	Finance	50	4	54	46.1
	Information Tech Post Bridge	3		3	2.8
	Information Technology	435	19	454	415
	Information Technology Bridge	1	2	3	4.1
	Marketing	37	7	44	39.7
Education	Education (Concurrent)	25		25	23.374
	Education (Consecutive) – Intermediate/Senior	114		114	114.936
	Education (Consecutive) – Primary/Junior	176		176	176.2
Energy Systems & Nuclear Science	Energy Systems Engineering	33	1	34	31.924
	Health Physics & Radiation Science	31	2	33	28.009
	Nuclear Engineering	259	2	261	242.007
	Nuclear Engineering & Management	17		17	14.563
Engineering & Applied Science	Automotive Engineering	149	5	154	125.589
	Automotive Engineering & Management	26	3	29	24.324
	Electrical Engineering	216	7	223	198.223
	Electrical Engineering & Management	30		30	27.029
	Manufacturing Eng & Management	2	1	3	1.603
	Manufacturing Engineering	31		31	26.758
	Mechanical Eng & Management	73	1	74	68.662
	Mechanical Engineering	396	4	400	369.916
	Software Engineering	92	2	94	84.16
Software Engineering & Management	5	1	6	3.462	
Health Sciences	Allied Health Sciences	8	57	65	28.8
	Health Sciences	466	18	484	454.9
	Medical Laboratory Science	133	4	137	121.9
	Nursing (Collaborative)	449	8	457	422
	Nursing (Post-PN)	55	72	127	89.2
	Nursing (Post-PN) Georgian	32	37	69	55.1
	Nursing (Post-PN) Lindsay	1	6	7	4.5
Nursing (Post-RN)		2	2	1.3	

**Undergraduate Students and FTEs by Faculty, Program and Full-time/Part-time Status, 2010-2011-
Continued**

Faculty	Program	Full-Time	Part-Time	Total	FTEs
Science	Applied and Industrial Math-Co-op	1		1	0.6
	Applied and Industrial Math	21	1	22	24.4
	Biological Science	352	13	365	343
	Biological Science & Management	18	1	19	17.8
	Chemistry	86	3	89	78.3
	Chemistry-Co-op	3		3	2.8
	Computing Science	82	3	85	77.4
	Computing Science-Co-op	5	1	6	5.6
	Education (Concurrent)	114	2	116	93.041
	Forensic Science	102	2	104	96.8
	General Science		1	1	0.4
	Physical Science	4		4	4.3
	Physics	33	3	36	34.1
	Physics & Management	1		1	1
Physics-Co-op	1		1	1	
Social Science and Humanities	Communication	184	5	189	176
	Communication Post Bridge	4		4	4.092
	Communications Bridge Program	1		1	2.277
	Criminology & Justice Bridge Program	34	46	80	72.761
	Criminology & Justice Post Bridge Program	126	7	133	132.179
	Criminology and Justice	644	18	662	636.5
	Legal Studies	143	6	149	144.7
	Legal Studies-Bridge Program	16	7	23	20.522
	Legal Studies-Post Bridge	10		10	9.275
Public Policy	23	2	25	20.8	
Undeclared	Exchange Student	5		5	3.6
	Not Applicable	4	16	20	11.6
Total		6515	456	6971	6421.086

Graduate Students and FTEs by Faculty, Program and Full-time/Part-time Status, 2010-2011

Faculty	Program	Full-Time	Part-Time	Total	FTEs
Business & Information Technology	Business Administration	1	7	8	3.1
	MBA	1	7	8	3.1
	Information Tech Security	6	11	17	9.3
	MITS	6	11	17	9.3
Education	Education	16	46	62	29.8
	MA		4	4	1.2
	MED	16	42	58	28.6
Energy Systems & Nuclear Science	Health Physics	1	2	3	1.6
	DIPL	1	2	3	1.6
	Nuclear Engineering	39	15	54	43.5
	MASC	16	6	22	17.8
	MENG	17	8	25	19.4
	PHD	6	1	7	6.3
	Operation and Maintenance	1		1	1
	DIPL	1		1	1
Engineering & Applied Science	Automotive Engineering	11		11	11
	MASC	9		9	9
	MENG	2		2	2
	Electrical and Computer Engineering	49	3	52	49.9
	MASC	30	3	33	30.9
	MENG	11		11	11
	PHD	8		8	8
	Mechanical Engineering	70	9	79	72.7
	MASC	32	8	40	34.4
	MENG	7	1	8	7.3
	PHD	31		31	31
Health Sciences	Health Sciences	25	9	34	27.7
	MHSC	25	9	34	27.7
Science	Applied Bioscience	28		28	28
	MSC	23		23	23
	PHD	5		5	5
	Computer Science	22		22	22
	MSC	18		18	18
	PHD	4		4	4
	Materials Science	8		8	8
	MSC	8		8	8
	Modelling & Computational Science	5	2	7	5.6
	MSC	5	2	7	5.6

Graduate Students and FTEs by Faculty, Program and Full-time/Part-time Status, 2010-2011 - Continued

Faculty	Program	Full-Time	Part-Time	Total	FTEs
Social Science and Humanities	Criminology	26	1	27	26.3
	MA	26	1	27	26.3
Total		308	105	413	339.5

Undergraduate Students by Faculty and Residency, 2010-2011

Faculty	Domestic	International	% Int.
Business & Information Technology	1669	96	5.4%
Education	431		0.0%
Energy Systems & Nuclear Science	340	5	1.4%
Engineering & Applied Science	965	79	7.6%
Health Sciences	1330	18	1.3%
Science	716	21	2.8%
Social Science and Humanities	1271	5	0.4%
Undeclared	20	5	20.0%
Total	6742	229	3.3%

Graduate Students by Faculty and Residency, 2010-2011

Faculty	Domestic	International	% Int.
Business & Information Technology	21	4	16.0%
Education	58	4	6.5%
Energy Systems & Nuclear Science	54	4	6.9%
Engineering & Applied Science	86	56	39.4%
Health Sciences	34		0.0%
Science	58	7	10.8%
Social Science and Humanities	25	2	7.4%
Total	336	77	18.6%

Students

All data summarizes official student enrolment as reported by UOIT to the Ontario Ministry of Training, Colleges and Universities, which has a count date of November 1 each academic year. Students pursuing more than one degree are counted within their major field of study. Students in the Concurrent BSc./BEd. degree are counted in the Faculty of Science in Years 1-4, and in the Faculty of Education in Year 5.

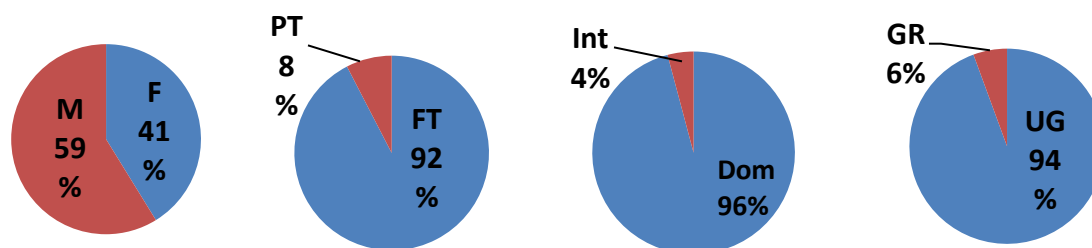
Undergraduate Student Demographics

	2003-04	2004-05	2005-06	2006-07	2007-08	2008-09	2009-10	2010-11
Gender								
Male	518	1052	1778	2402	2895	3125	3623	4069
Female	418	778	1300	1895	2118	2275	2621	2902
% Female	45	43	42	44	42	42	42	42
Enrolment Status								
Full-time	903	1782	2922	4152	4829	5164	5883	6515
Part-Time	33	48	156	145	184	236	361	456
% Part-Time	4	3	5	3	4	4	6	7
Residency								
Domestic	895	1757	2928	4095	4771	5178	6008	6742
International	41	73	150	202	242	222	236	229
% International	4	4	5	5	5	4	4	3
Total	936	1830	3078	4297	5013	5400	6244	6971

Graduate Student Demographics

	2005-06	2006-07	2007-08	2008-09	2009-10	2010-11
Gender						
Male	10	20	72	129	232	272
Female	2	3	18	38	113	141
% Female	20	13	20	23	33	34
Enrolment Status						
Full-time	7	15	63	121	260	308
Part-Time	5	8	27	46	85	105
% Part-Time	42	35	30	28	25	25
Residency						
Domestic	10	20	78	146	291	336
International	2	3	12	21	54	77
% International	17	13	13	13	16	19
Total	12	23	90	167	345	413

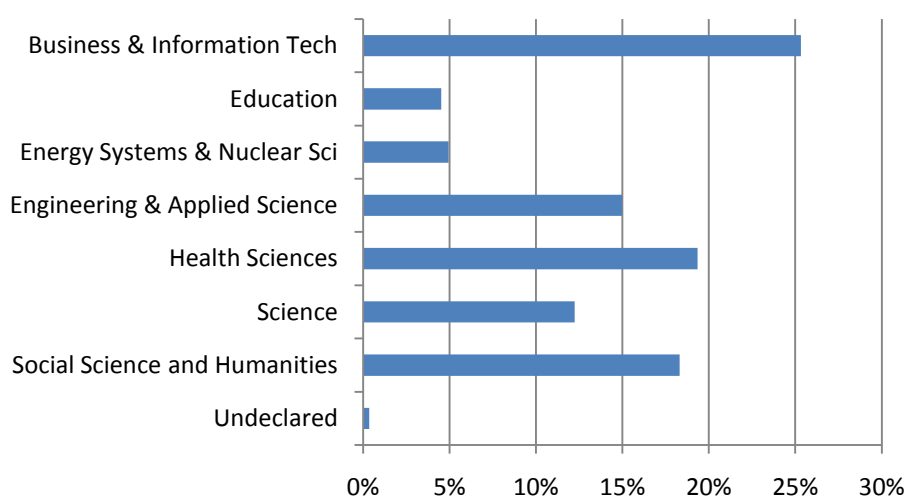
Overall Undergraduate and Graduate Student Demographics, 2010-2011



Undergraduate Student Count by Faculty

Faculty	2003-04	2004-05	2005-06	2006-07	2007-08	2008-09	2009-10	2010-11
Business and Information Technology	252	482	836	1165	1365	1564	1675	1765
Education	70	90	92	211	260	225	268	315
Energy Systems and Nuclear Science	109	170	193	214	227	225	300	345
Engineering and Applied Science	113	277	501	684	868	923	1007	1044
Health Sciences	145	296	550	792	881	1015	1170	1348
Science	105	209	375	508	625	653	796	853
Social Science & Humanities	135	302	506	702	763	778	1003	1276
Undeclared	7	4	25	21	24	17	25	25
Total	936	1830	3078	4297	5013	5400	6244	6971

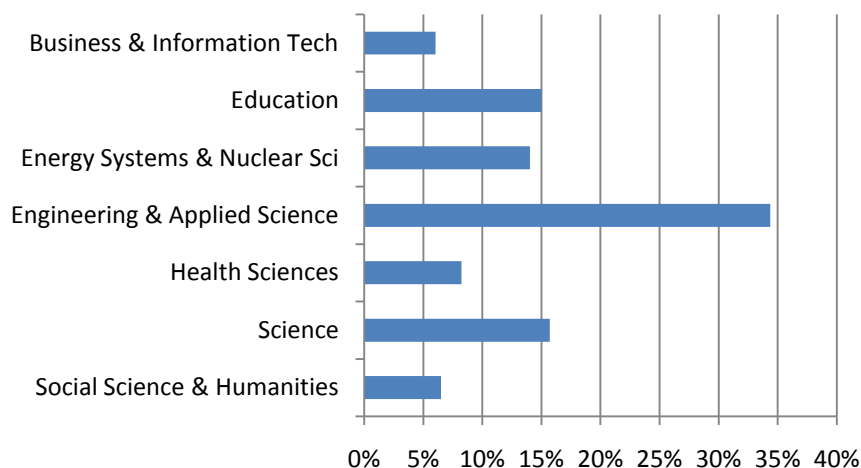
Undergraduate Enrolment by Faculty, 2010-2011



Graduate Student Count by Faculty

Faculty	2005-06	2006-07	2007-08	2008-09	2009-10	2010-11
Business and Information Technology	12	16	21	24	38	25
Education	n/a	n/a	n/a	n/a	43	58
Energy Systems and Nuclear Science	n/a	n/a	n/a	24	47	142
Engineering and Applied Science	n/a	7	47	77	122	34
Health Sciences	n/a	n/a	22	n/a	21	65
Science	n/a	n/a	n/a	39	56	27
Social Science & Humanities	n/a	n/a	n/a	n/a	16	62
Undeclared	n/a	n/a	n/a	3	2	0
Total	12	23	90	167	345	413

Graduate Enrolment by Faculty, 2010-2011



Undergraduate FTEs by Faculty

Faculty	2003-04	2004-05	2005-06	2006-07	2007-08	2008-09	2009-10	2010-11
Business and Information Technology	237.0	459.6	789.5	1128.6	1279.9	1474.6	1566.3	1667.8
Education	69.6	91.0	90.1	206.5	259.8	229.3	277.4	314.5
Energy Systems and Nuclear Science	103.9	164.0	178.9	199.3	215.3	212.5	279.2	316.5
Engineering and Applied Science	114.0	270.0	482.9	655.1	792.6	840.3	927.0	929.7
Health Sciences	144.1	283.3	518.4	710.6	810.2	904.8	1041.6	1177.7
Science	88.3	197.5	341.7	470.5	563.6	601.6	706.4	780.5
Social Science & Humanities	130.6	283.2	469.3	659.3	710.1	741.4	949.8	1219.1
Undeclared		0.0	0.0	9.9	13.8	8.2	11.5	15.2
Total	887.5	1748.6	2870.9	4039.8	4738.4	5012.8	5759.3	6421.1

Graduate FTEs by Faculty

Faculty	2005-06	2006-07	2007-08	2008-09	2009-10	2010-11
Business and Information Technology	8.7	12.5	12.6	14.9	24.0	12.4
Criminology, Justice and Policy Studies	n/a	n/a	n/a	n/a	15.3	26.3
Education	n/a	n/a	n/a	n/a	23.1	29.8
Energy Systems and Nuclear Science	n/a	n/a	n/a	17.7	38.0	46.1
Engineering and Applied Science	n/a	4.9	37.9	63.7	109.4	133.6
Health Sciences	n/a	n/a	n/a	n/a	18.2	27.7
Science	n/a	n/a	20.6	37.6	55.3	63.6
Undeclared	n/a	n/a	n/a	0.9	0.6	0
Total	8.7	17.4	71.1	134.8	283.9	339.5

Age Distribution of Students

Age	2003-04	2004-05	2005-06	2006-07	2007-08	2008-09	2009-10	2010-11
<20	627	983	1564	1595	1769	1888	2231	2463
20-24	182	658	1205	2192	2707	2928	3315	3684
25-29	45	92	149	296	357	426	604	710
30-34	24	26	60	80	95	118	144	193
35-39	20	29	45	66	80	104	130	128
≥40	38	41	57	86	92	103	165	206
Unknown	0	1	10	5	3	0	0	0
Overall	936	1830	3090	4320	5103	5567	6589	7384

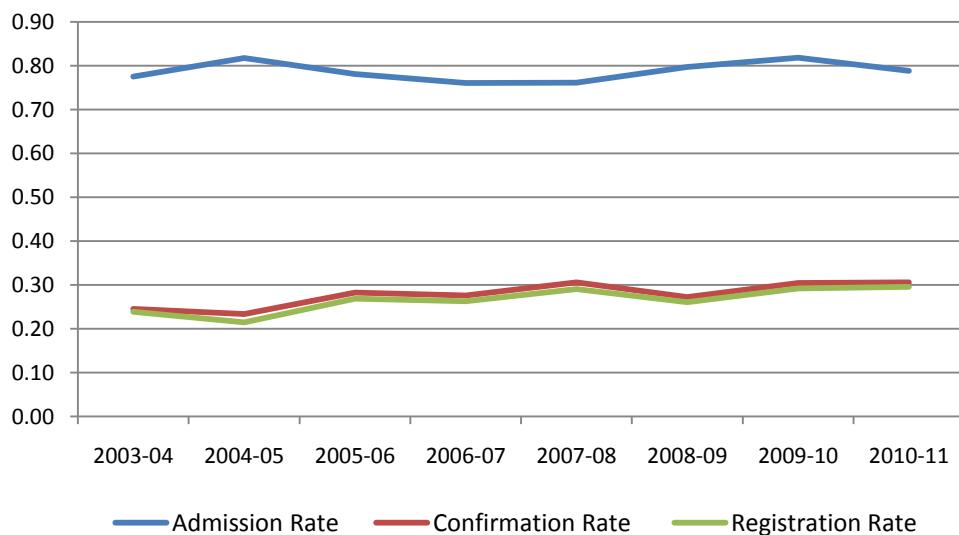
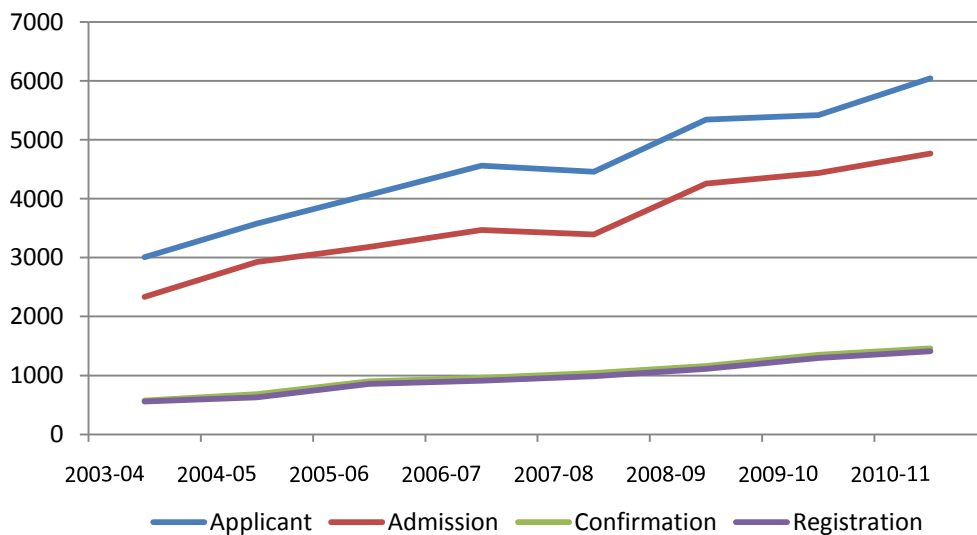
New Student Admission Averages by Faculty

Faculty	2003-04	2004-05	2005-06	2006-07	2007-08	2008-09	2009-10	2010-11
Business and Information Technology	75	75	75	76	76	77	77	77
Energy Systems and Nuclear Science	78	76	79	78	79	79	79	79
Engineering and Applied Science	76	75	76	76	76	76	76	76
Health Sciences	-	76	74	77	77	78	78	78
Science	76	75	77	79	78	79	79	79
Social Science and Humanities	76	75	74	75	75	76	76	76
Undeclared	-	-	73	-	-	-	-	-
Overall average	76	75	75	77	77	77	77	77

* As students from Concurrent Education are placed in the Faculty of Science there are no 101 admissions for Education, hence there are not any admission averages to report for this Faculty.

New Student Applications from Ontario High Schools, Yield Rates

Year	2003-04	2004-05	2005-06	2006-07	2007-08	2008-09	2009-10
Applicant	3010	3580	4070	4560	4457	5343	5422
Admission	2334	2928	3180	3470	3393	4260	4437
Confirmation	573	684	898	957	1039	1160	1351
Registration	557	628	854	913	986	1110	1296
Admission Rate (Admission/Applicant)	0.78	0.82	0.78	0.76	0.76	0.80	0.82
Confirmation Rate (Confirmation/Admission)	0.25	0.23	0.28	0.28	0.31	0.27	0.30
Registration Rate (Registration/Admission)	0.24	0.21	0.27	0.26	0.29	0.26	0.29



Distribution of First Year Class Sizes

Number of Students	2005-06	2006-07	2007-08	2008-09	2009-10	2010-11
< 30	29	2	1	8	25	9
30-60	15	18	17	23	37	40
61-100	11	7	11	11	7	13
101-250	28	36	35	31	42	39
250+	0	0	0	0	1	3
Total	83	63	64	73	112	104

Distribution of Fourth Year Class Sizes

Number of Students	2006-07	2007-08	2008-09	2009-10	2010-11
< 30	61	65	108	96	109
30-60	23	46	36	64	49
61-100	5	4	5	7	1
101-250	0	2	1	0	2
250+	0	0	0	1	0
Total	89	117	150	168	161

Degrees Granted, 2004-2010

Degree	2004	2005	2006	2007	2008	2009	2010
Bachelor of Arts (Honours)				94	155	146	163
Bachelor of Commerce (Honours)				148	160	176	184
Bachelor of Education (Consecutive)	56	90	90	202	261	214	254
Bachelor of Education (Concurrent)						10	9
Bachelor of Engineering & Management (Honours)				1	16	32	51
Bachelor of Engineering (Honours)				80	117	105	148
Bachelor of Health Science (Honours)					19	62	83
Bachelor of Information Technology						60	68
Bachelor of Science						3	2
Bachelor of Science (Honours)				36	37	82	94
Bachelor of Science & Management (Honours)						3	9
Bachelor of Science in Nursing (Honours)				107	91	123	105
Master of Applied Science						18	30
Master of Education							1
Master of Engineering					8	3	11
Master of Information Technology Security				8	7	15	14
Master of Science						9	18
Total	56	90	90	676	871	1061	1244

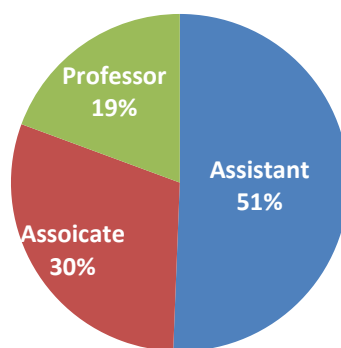
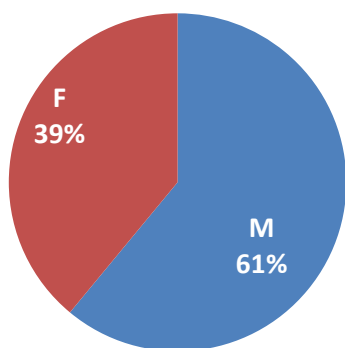
Faculty

Faculty counts are summarized from reports submitted by Human Resources to (2003-2005) COU and (2005-2011) Statistics Canada. All definitions follow those used in the original submission. Counts are based on Faculty as of October 1st of the academic year. Percentages are rounded to the nearest whole number.

Core Faculty Demographics

	2003-04	2004-05	2005-06	2006-07	2007-08	2008-09	2009-10	2010-11
Gender								
Male	21	41	47	57	70	88	89	97
Female	10	15	20	30	37	49	60	63
% Female	32%	27%	30%	34%	35%	36%	40%	39%
Appointment Status								
Assistant	7	29	36	53	64	81	75	81
Associate	12	14	15	18	21	29	45	48
Professor	12	13	16	16	22	27	29	31
Total	31	56	67	87	107	137	149	160

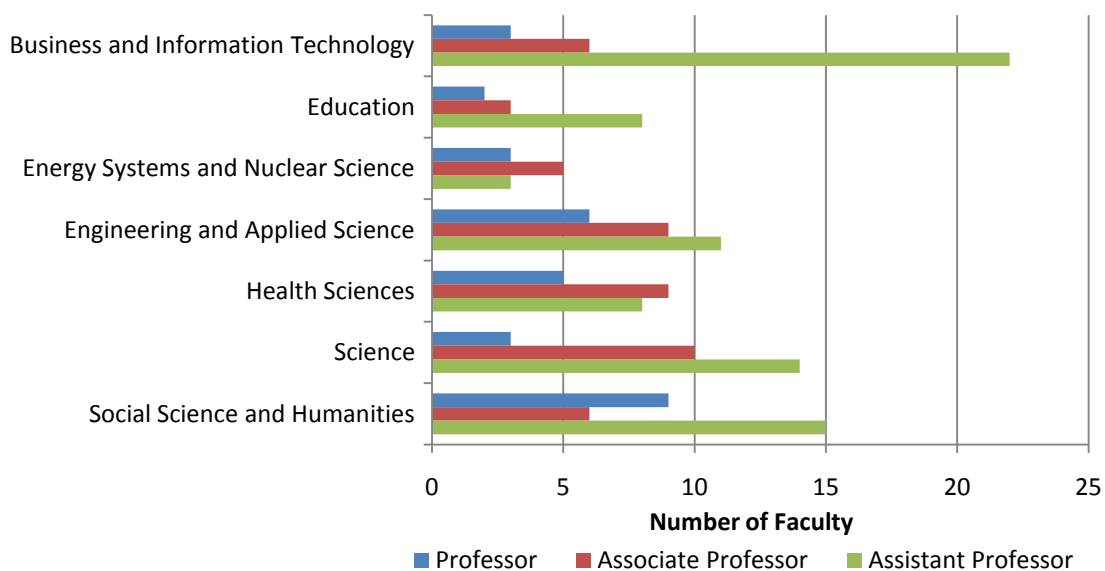
Core Faculty Demographics, 2010-2011



Core Faculty Count by Faculty, Rank and Gender, 2010-2011

Faculty	Assistant Professor		Associate Professor		Professor		Total
	F	M	F	M	F	M	
Business and Information Technology	10	12	2	4	1	2	31
Education	6	2	0	3	0	2	13
Energy Systems and Nuclear Science	1	2	0	5	0	3	11
Engineering and Applied Science	5	6	0	9	0	6	26
Health Sciences	3	5	7	2	3	2	22
Science	5	9	2	8	0	3	27
Social Science and Humanities	12	3	4	2	2	7	30
Total	42	39	15	33	6	25	160

Distribution of Core Faculty Members by Faculty and Rank, 2010-2011



Tuition and Fees

Tuition and Fees (2010-11 full-time fee schedule)

Tuition (Domestic)	Year 1	Year 2	Year 3	Year 4	Year 5
BA, BSc, BEd, BHSc, BSc, BSc & Mgmt, BScN	\$ 5,214	\$ 5,189	\$ 5,165	\$ 5,140	\$ 5,115
BCom	\$ 6,147	\$ 5,920	\$ 5,700	\$ 5,489	\$ 5,489
BIT	\$ 8,082	\$ 7,782	\$ 7,494	\$ 7,217	\$ 7,217
BEng, BEng & Mgmt	\$ 6,675	\$ 6,428	\$ 6,190	\$ 5,960	\$ 5,740
MITS	\$ 9,846	\$ 9,482	-	-	-
MASc, MSc, MEng	\$ 7,347	\$ 7,076	-	-	-
PhD, Mechanical Engineering	\$ 7,347	\$ 7,076	-	-	-
Tuition (International)	Year 1	Year 2	Year 3	Year 4	Year 5
BA, BSc, BCom, BEd, BHSc, BSc, BSc & Mgmt, BScN	\$14,040	\$14,040	\$14,040	\$14,040	\$14,040
BIT	\$16,592	\$16,592	\$16,592	\$16,592	\$16,592
BEng, BEng & Mgmt	\$15,315	\$15,315	\$15,315	\$15,315	\$15,315
MITS	\$18,375	\$18,375	\$18,375	\$18,375	\$18,375
MASc, MSc, MEng	\$14,175	\$14,175	\$14,175	\$14,175	\$14,175
Other Compulsory Fees (all year levels)					
Ancillary	\$608.53				
Athletic Centre Levy	\$153.45				
Co-op and Internship (per semester)	\$400 (optional Engineering Co-op or Internship Program)				
Health/Dental	\$193.46				
Medical Laboratory Fee	\$60				
Mobile Learning (laptop lease, software and technical services)	\$1,345 (BA, BCom, BScN, BEd Consecutive)				
	\$1,533 (All remaining programs)				
Nursing Lab	\$50 (BScN Years 1 and 2)				
Nursing Levy & Mask Fitting	\$20 (BScN)				
Student Organization	\$168.02				
University Health Insurance Plan (International Students)	\$720.00				
U-Pass (Transit Pass)	\$120				
Varsity Athletics Fee	\$89				

Student Financial Aid & Scholarships

Amounts are in Canadian dollars. Data is provided by the Department of Financial Aid and Awards.

Student Scholarships and Awards – 2010-11

Admission Scholarships	Terms	New	Continuing	Total	Total Amount
Chancellor's Scholarship	(\$7,000/year for four years)	1	0	1	\$ 7,000
President's Scholarship	(\$6,000/year for four years)	2	3	5	\$ 30,000
Founder's Scholarship	(\$5,000/year for four years)	2	4	6	\$ 30,000
Global Leadership Award	(\$11480/year for four years)	0	1	1	\$ 11,480
Consecutive Education Award	(\$6000 for one year)			0	-
<hr/>					
Awards of Recognition	Terms	New	Continuing	Total	Total Amount
95.0% - 100%	\$3000 (renewable in 2nd, 3rd and 4th year)	8	5	13	\$ 39,000
90.0% - 94.9%	\$2,000 (renewable in 2nd, 3rd and 4th year)	45	49	94	\$ 188,000
85.0% - 89.9%	\$1,500 (renewable in 2nd, 3rd and 4th year)	115	77	192	\$ 288,000
	\$1,250 (renewable in 2 nd , 3 rd and 4 th year)	286	17	303	\$ 378,750
80.0% - 84.9%	\$750 (renewable in 2nd, 3rd and 4th year)	0	11	11	\$ 8,250
<hr/>					
Other Awards	Terms	New	Continuing	Total	Total Amount
High Average Recognition Program (HARP) Awards	\$6000 in Year 1, \$4000 renewable in 2 nd , 3 rd and 4 th year	0	3	3	\$ 12,000
<hr/>					
Total Awards and Scholarships		459	170	629	\$ 992,480

Student Financial Aid - 2010-11

Type of Aid	Total
Total Nil awards*	543
Total Canada Student Loan only	753
Total Ontario Student Loan only	65
Total Grant only	30
Total Canada and Ontario Student Loan	2705
Total Number of OSAP applications on file	4096

	Value
Total Canada Student Loans Issued	\$ 17,073,868
Total Ontario Student Loans Issued	\$ 9,943,274
Total Grants (859)	\$ 7,380,961
Total Funding Issued	\$ 34,398,103

*'Nil' awards are situations where a student's OSAP assessment results in no funding due to their financial resources exceeding or meeting their calculated costs.

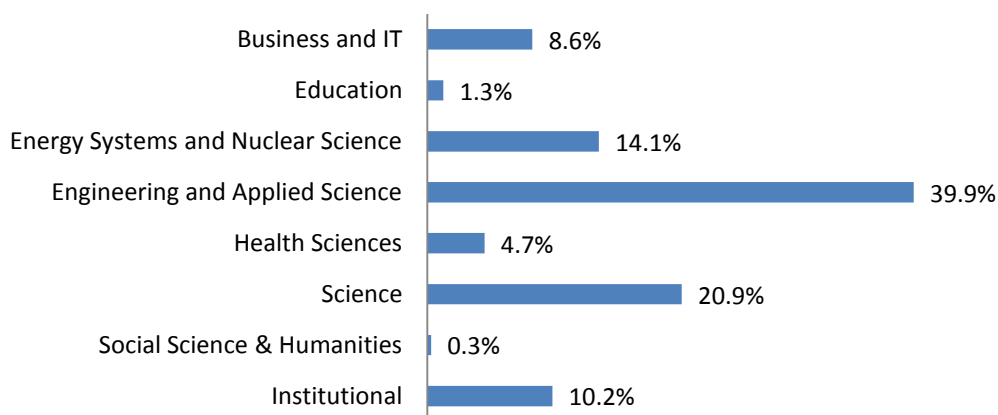
Research

Amounts are in Canadian dollars. Data is provided by UOIT Department of Research Services.

Research Grants and Contracts by Faculty/School, 2010-11

Faculty/School	Total	Source	Funding
Business and Information Technology	\$822,614	Tri-Council	
Criminology, Justice and Policy Studies	\$30,127	NSERC	\$3,171,134
Education	\$126,207	SSHRC	\$197,674
Energy Systems and Nuclear Science	\$1,343,396	CIHR	\$301,380
Engineering and Applied Science	\$3,806,020	CFI	\$594,842
Health Sciences	\$448,787	CRC	\$700,000
Science	\$1,991,768	NCE	\$226,313
Institutional	\$978,562	Other Federal Government	\$1,206,641
Total	\$9,547,481	Total Federal Government	\$6,397,984
		MRI	\$1,135,305
		OCE	\$213,940
		Other Provincial Government	\$ 41,928.00
		Total Provincial Government	\$1,391,173
		Industry	\$1,307,287
		Other	\$ 451,037.35
		Total Other Sources	\$1,758,324
		Grand Total	\$9,547,481

Percentage of the Total Research Grants Held by Faculty/School, 2010-2011

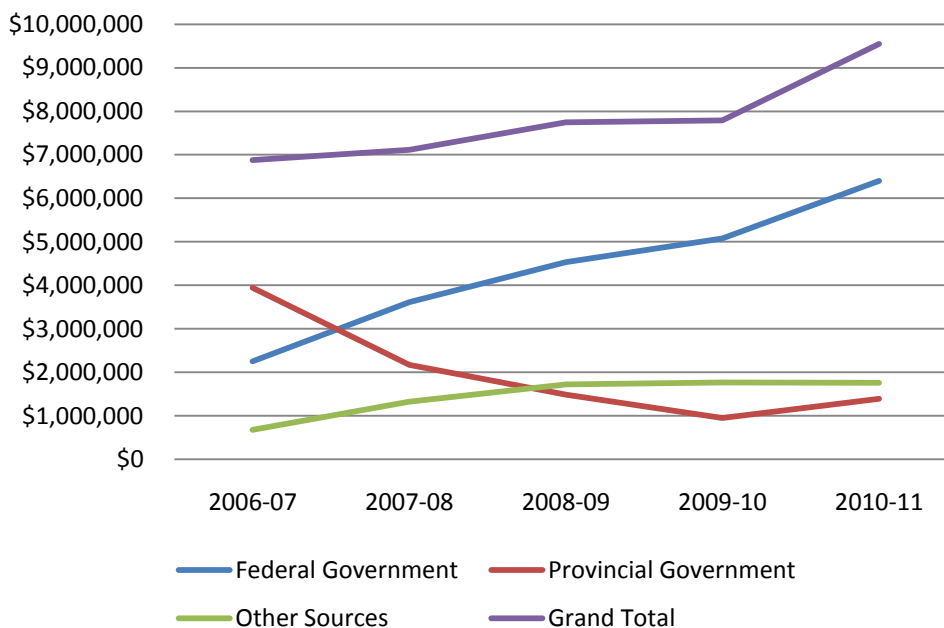


Research Grants by Faculty, 2006-2011

Faculty	2006-07	2007-08	2008-09	2009-10	2010-11
Business and Information Technology	\$ 287,527	\$ 808,390	\$ 547,464	\$ 733,811	\$822,614
Education	\$ 141,206	\$ 235,967	\$ 106,984	\$ 69,070	\$126,207
Energy Systems and Nuclear Science	\$ 144,484	\$ 590,858	\$ 1,269,665	\$ 1,441,284	\$1,343,396
Engineering and Applied Science	\$ 1,846,080	\$ 2,820,402	\$ 3,324,013	\$ 2,342,565	\$3,806,020
Health Sciences	\$ 42,492	\$ 390,972	\$ 358,112	\$ 373,599	\$448,787
Science	\$ 861,335	\$ 1,631,879	\$ 1,298,568	\$ 1,885,469	\$1,991,768
Social Science & Humanities	\$ 125,835	\$ 105,093	\$ 18,870	\$ 38,870	\$30,127
Institutional	\$ 3,428,202	\$ 526,777	\$ 819,211	\$ 908,390	\$978,562
Total	\$ 6,877,161	\$ 7,110,338	\$ 7,742,888	\$ 7,793,058	\$9,547,481

Total Research Grants and Contracts, 2006-2011

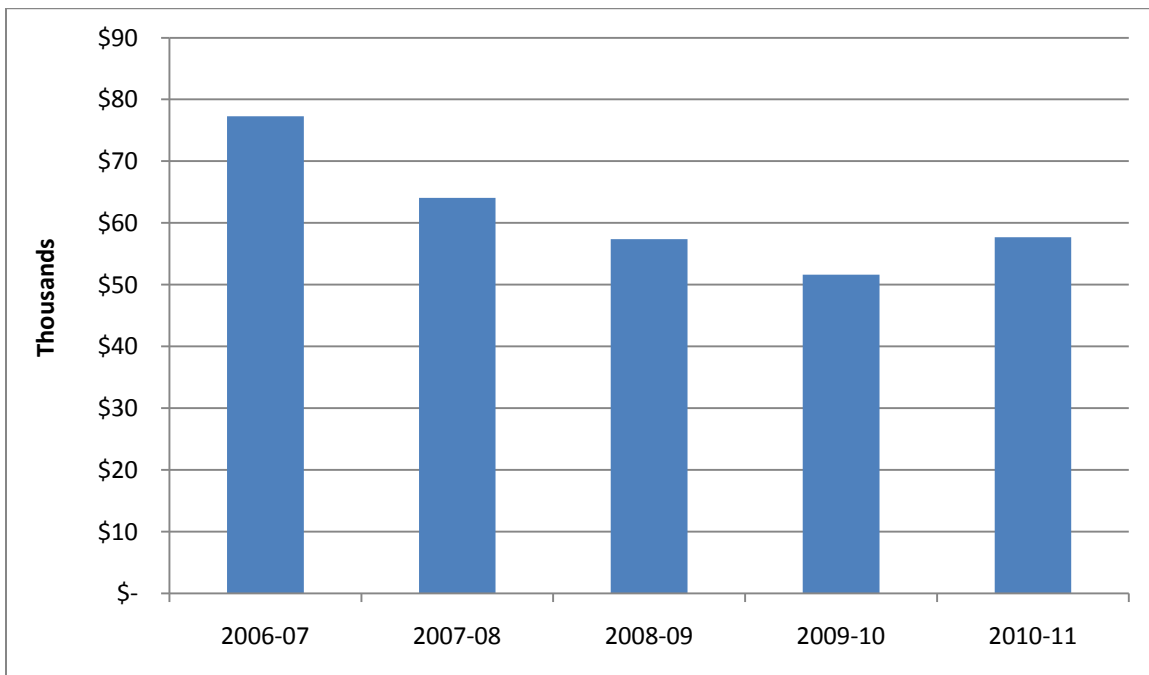
Funding Source	2006-07	2007-08	2008-09	2009-10	2010-11
Total Federal Government	\$ 2,256,583	\$ 3,610,470	\$ 4,529,801	\$ 5,073,879	\$6,397,984
Total Provincial Government	\$ 3,943,515	\$ 2,173,733	\$ 1,491,740	\$ 953,469	\$1,391,173
Total Other Sources	\$ 677,063	\$ 1,326,135	\$ 1,721,347	\$ 1,765,710	\$1,758,324
Total	\$ 6,877,161	\$ 7,110,338	\$ 7,742,888	\$ 7,793,058	\$9,547,481



Research Intensity per capita

	2006-07	2007-08	2008-09	2009-10	2010-11
Average	\$77,271	\$64,057	\$57,355	\$51,610	\$57,710

*Academic Administrators are not included in Faculty counts. Faculty with cross appointments have been weighted appropriately within each Faculty.



Finance

UOITs Finance Department publishes reference information including Financial Statements and Operating Budgets online. This can be found at: <http://www.uoit.ca/EN/main/11259/11270/finance/reference.html>.

Residences, Library and Physical Space

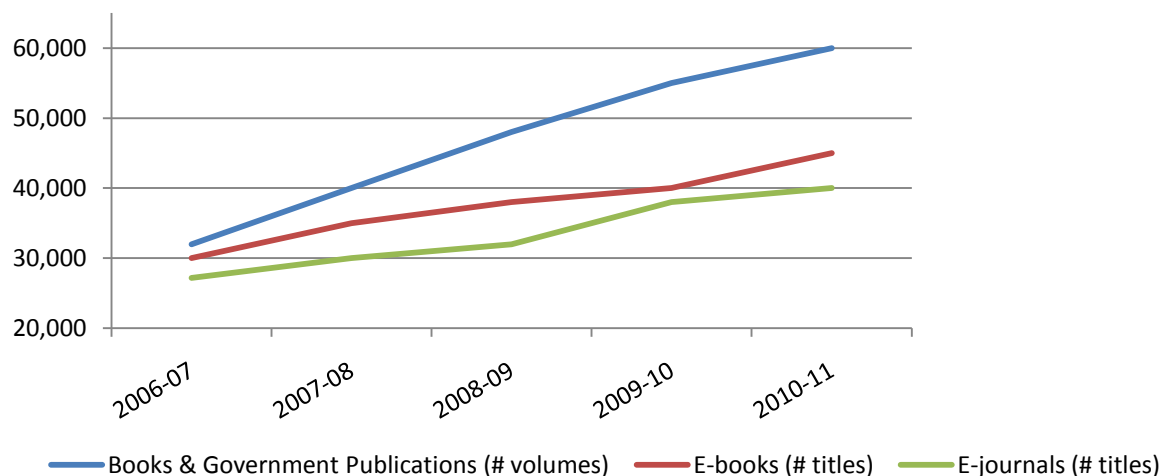
Residence Accommodation located on Durham College/ UOIT Property

Residence	Style	Beds Available
Simcoe Village	Open Concept Suites	440
Simcoe Village	Private	214
South Village	Private	706
West Residence	Apartment-style	216
Total		1,576

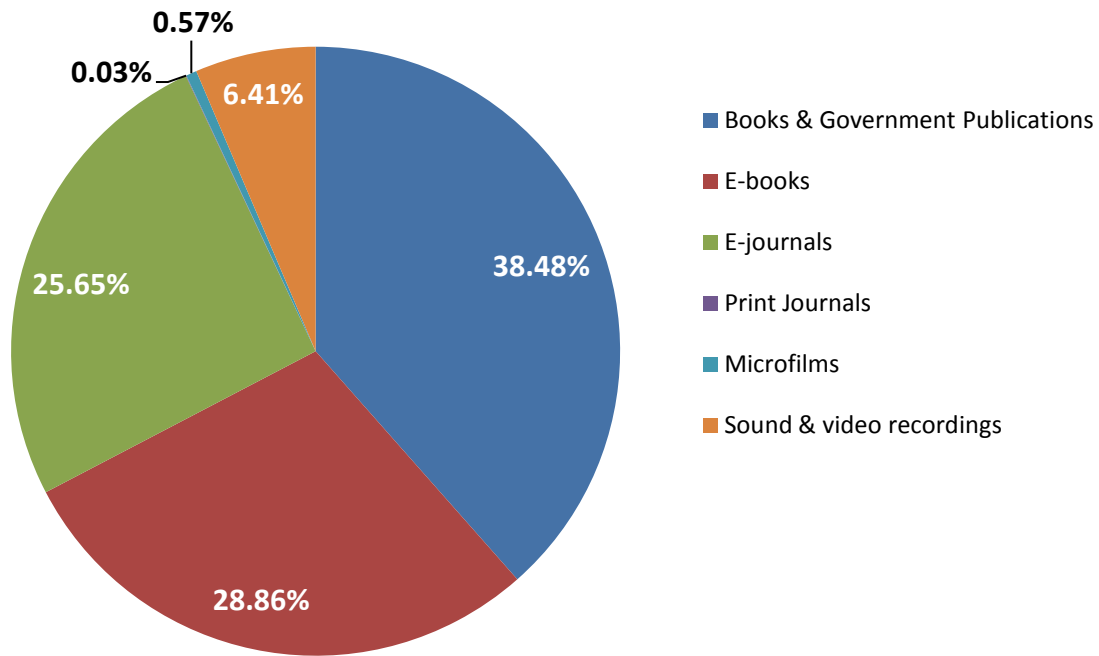
1. All accommodations are shared with Durham College.
2. West residence available to upper year students only.

Number of Library Holdings, 2006-2011

	2006-07	2007-08	2008-09	2009-10	2010-11
Books & Government Publications (# volumes)	32,000	40,000	48,000	55,000	60,000
E-books (# titles)	30,000	35,000	38,000	40,000	45,000
E-journals (# titles)	27,200	30,000	32,000	38,000	40,000
Print Journals (# titles)	36	37	38	40	50
Microfilms (# pieces)	887	887	887	887	887
Sound & video recordings (# titles)	2,500	3,000	3,500	4,000	10,000
Total	92,623	108,924	122,425	137,927	155,937



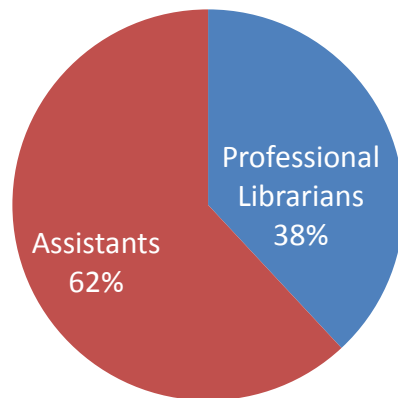
Library Collections, 2010-2011



Library Personnel

Type of Personnel	2005-2006	2006-2007	2007-2008	2008-2009	2009-2010
Professional Librarians	8	8	8	8	8.6
Assistants	11	11	12	13	14
Total	19	19	20	21	22.6

Library Personnel, 2009-2010



Actual Physical Space by COU Category

Official space data is submitted to COU every three years. The data below represents the November 2010 data that was submitted to the Space Committee, all data is yet to be approved and finalized. Official finalized numbers for COU November 2010 may differ slightly to that provided below.

Actual Physical Space by COU Category - November 2010

Category	NASM	%
1.0 Classroom Facilities		
1.1 Tiered Classrooms	1841	3.71%
1.2 Non-tiered Classrooms	4752	9.57%
1.3 Classroom Service Space	49	0.10%
2.0 Laboratories, Undergraduate	4,992	10.05%
3.0 Research Labs	3,139	6.32%
4.0 Academic Departmental Offices & Related	4,799	9.66%
5.0 Library Facilities & Campus Study Space	3,186	6.41%
6.0 Athletic Recreation Space		0.00%
6.1 Athletic Activity Areas	4,905	9.87%
6.1 Athletic Seating Space	401.385	0.81%
6.3 Athletic Service Space	1,336	2.69%
7.0 Food Service	1,382	2.78%
8.0 Bookstore and Merchandising	42.650	0.09%
9.0 Plant Maintenance	0.000	0.00%
10.0 Administrative Offices & Related	3,839	7.73%
11.0 Audio-Visual Facilities	0.000	0.00%
12.0 Central Services	488.328	0.98%
13.0 Health Service Facilities	109.950	0.22%
14.0 Common Use & Student Activity Space	787.466	1.59%
15.0 Assembly & Exhibition Facilities	580.254	1.17%
16.0 Unassigned (Boiler/Electrical/Mechanical Spaces)	10,881	21.91%
17.0 Residential Space		0.00%
17.1 Residence Living Space	0	0.00%
17.2 Residence Service Space	0	0.00%
18.0 Animal Space	0.000	0.00%
19.0 Other University Facilities	2163.900	4.36%
20.0 Health Science Clinical Facilities	0.000	0.00%
Total NASM (Category 1-20)	49,673	100.00%
Total NASM (Category 1-20 excluding 16)	38,792	
Total NASM (Category 17-20 non-formula areas)	2,164	

Actual Physical Space by COU Category - November 2010 - Continued

Building Name	NASM	%
Campus Ice Centre	4966	10.0%
Durham College: B-wing	23	0.0%
Campus Corners	2692	5.4%
Campus Recreation and Wellness Centre	2496	5.0%
55 Bond St. E.	1984	4.0%
Midtown Mall	433	0.9%
Regent Theatre	1179	2.4%
2 Simcoe	922	1.9%
11 Simcoe St. N.	2743	5.5%
Ontario Power Generation (OPG) Engineering Building	2366	4.8%
Campus Library	4434	8.9%
Simcoe Building	2265	4.6%
Durham College: S-wing	279	0.6%
Campus Tennis Centre	2018	4.1%
U5 Building	1035	2.1%
Academic Success Centre	111	0.2%
Science Building	11100	22.3%
Business and IT Building	6472	13.0%
Library Portable	788	1.6%
University Pavillion	526	1.1%
VanBots Trailer	504	1.0%
Willey - Durham College	338	0.7%
Total All Buildings	49673	100%

Athletics

Athletics data is provided by the Campus Athletic Centre.

Student Athletes by Sport, 2010-11

Faculty	Ontario University Athletics			Canadian Interuniversity Sport			Clubs			Grand Total
	M	F	Total	M	F	Total	M	F	Total	
Hockey	26	24	50	26	24	50				50
Rowing	25	25	50							50
Soccer	24		24	24		24				24
Tennis	9	9	18							18
Women's Lacrosse								15	15	15
Dance							3	15	18	18
Total	84	58	142	50	24	74	3	30	33	175